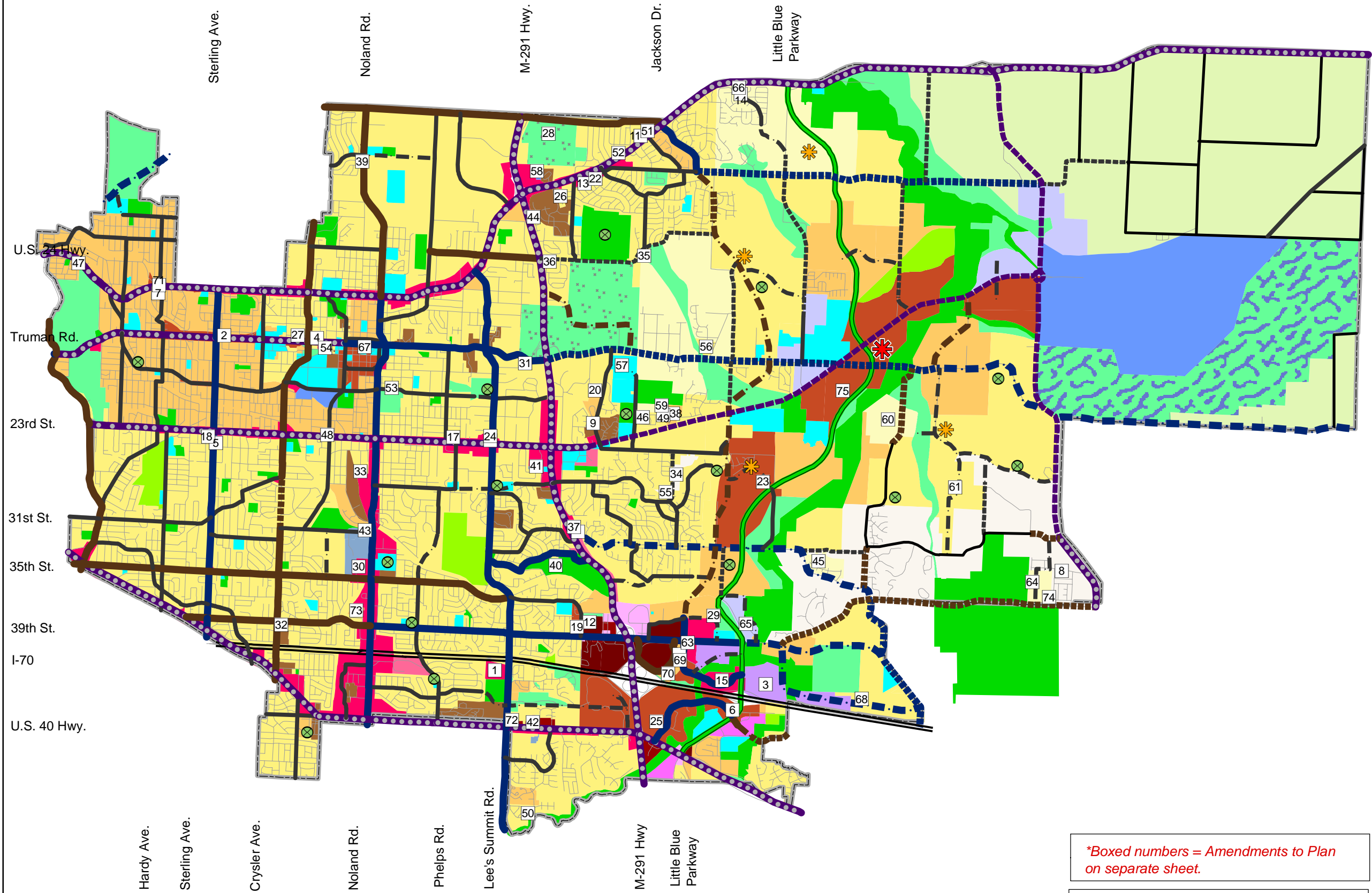


# The City of Independence Comprehensive and Thoroughfare Plan



**Legend**

- Divided Highway
- Highway
- Highway to be Upgraded
- Little Blue Parkway
- Arterials - Major
- Arterials to be Upgraded
- Arterials Planned
- Minor Arterials
- Minor Arterials Upgraded
- Minor Arterials Planned
- Rural Minor Arterial
- Collector
- Collector to be Upgraded
- Collector Planned
- Agricultural/Rural Res. \*\* Less than 0.2 d.u./AC
- Estate Density Res. \*\*0.2 to 1.5 d.u./AC
- Low Density Res. \*\* 1.5 to 3.0 d.u./AC
- Low Medium Density Res. \*\* 3.0 to 7.0 d.u./AC
- Medium Density Res. \*\* 7.0 to 14.0 d.u./AC
- High Density Res. \*\* Greater than 14.0 d.u./AC
- Mixed Use
- Low Density Commercial
- Commercial
- Highway Commercial
- Local Commercial
- Regional Commercial
- Office
- Office Park
- Business/Industrial Park
- Business Park
- Industrial Park
- Light Industrial
- Open Space
- Open Space/Industrial Reserve
- Open Space/Underground
- Public Parks
- Private Recreation
- Public /Semi Public Facilities
- Plan Changes
- ⊗ Proposed Parks
- ★ Town Center
- ★ Village Center
- Streets

**Note: \*\*Gross Dwelling Units Per Acre**

*\*Boxed numbers = Amendments to Plan on separate sheet.*

The City of Independence makes no warranties or guarantees with respect to GIS maps. The full GIS Disclaimer Policy is available upon request from The Community Development Dept.

Adopting Resolution #3913; July 17, 1993  
Revised Thoroughfare Plan Res. #5072,  
May 3, 2004